

# Comparison of DNA methylation landscape between Czech and Armenian vineyards show their unique character and increased diversity

KATEŘINA BARÁNKOVÁ<sup>1</sup>, ANNA NEBISH<sup>2,3</sup>, JAN TRÍSKA<sup>4</sup>,  
JANA RADDOVÁ<sup>1</sup>, MIROSLAV BARÁNEK<sup>1</sup>

<sup>1</sup>Mendeleum Department, Faculty of Horticulture, Mendel University in Brno, Lednice, Czech Republic

<sup>2</sup>Department of Genetics and Cytology, Yerevan State University, Yerevan, Armenia

<sup>3</sup>Research Group of Plant Genetics and Immunology, Institute of Molecular Biology  
of NAS RA Yerevan, Yerevan, Armenia

<sup>4</sup>Laboratory of Metabolomics and Isotopic Analyses, Global Change Research Institute CAS,  
Brno, Czech Republic

## Electronic Supplementary Material (ESM)

The authors are fully responsible for both the content and the formal aspects of the electronic supplementary material. No editorial adjustments were made.

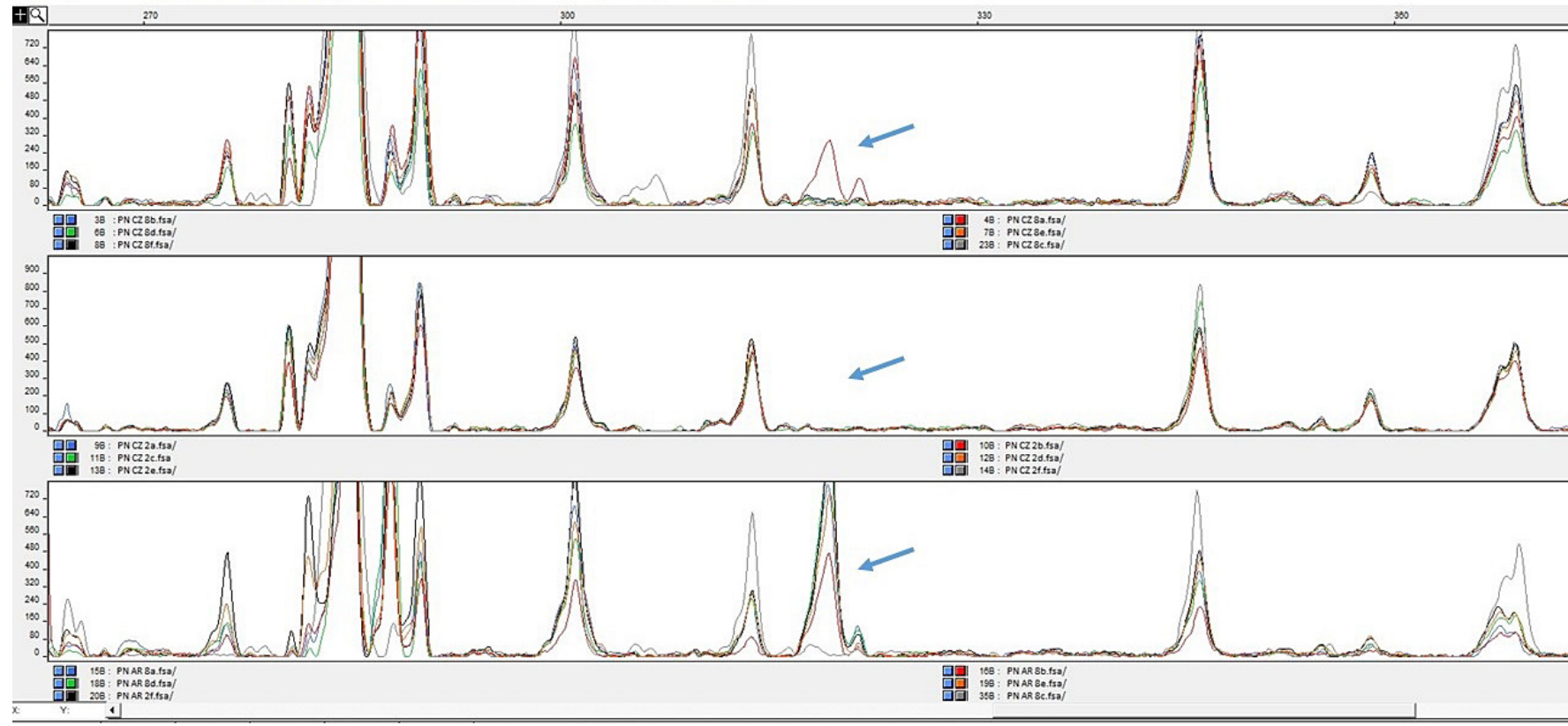


Figure S1. Example of polymorphic electrophoregram obtained by using Eco-ACA + Hpa-TCAA adaptors

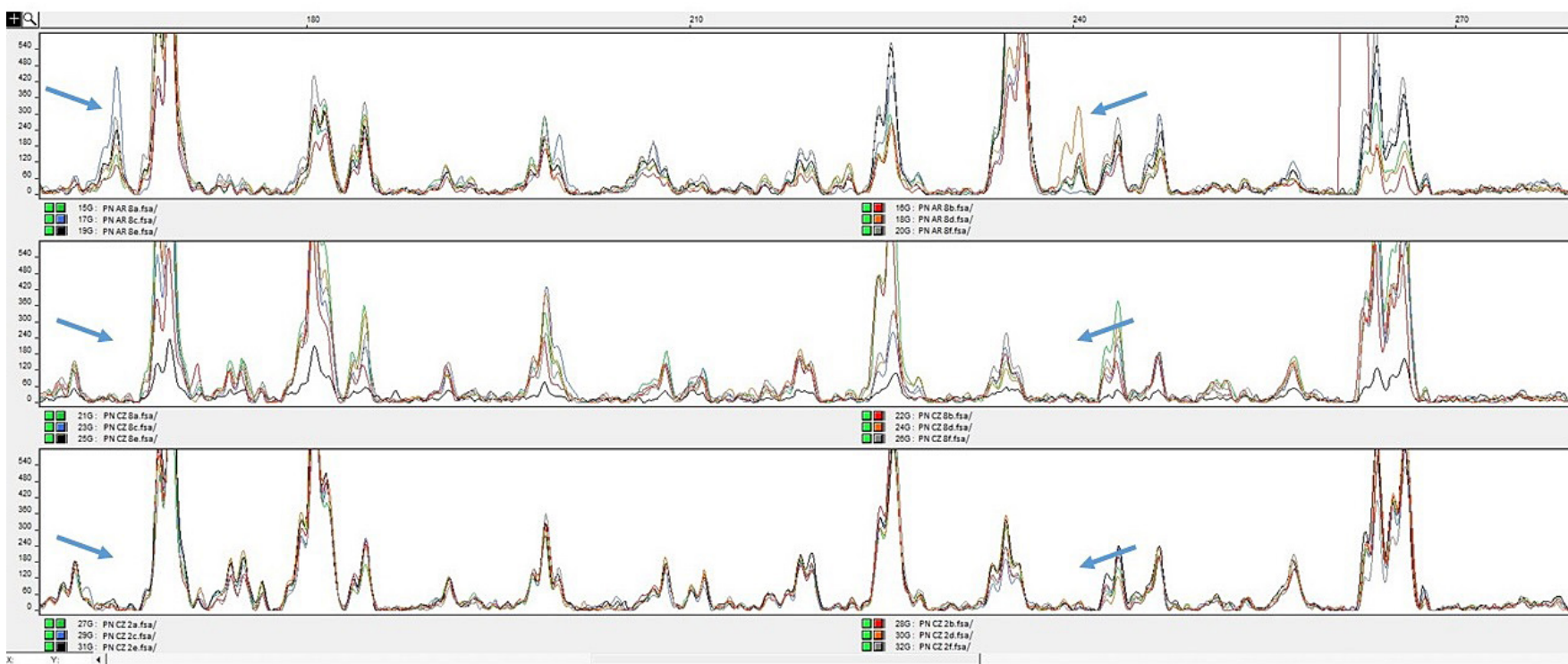


Figure S2. Example of polymorphic electrophoregram obtained by using Eco-ACG + Hpa-TCAA adaptors