

Identification and Characterization of the *yls* Mutation in Rice (*Oryza sativa* L.) with Lower Photosynthetic Pigment Content

SIXUE LIU^{1,2#}, LIMENG DENG^{1#}, YAPING FU², GUOCHENG HU²,
WENZHEN LIU² and XIN ZHAO¹

¹College of Life Sciences, Capital Normal University, Beijing, P.R. China; ²State Key Laboratory of Rice Biology, China National Rice Research Institute, Hangzhou, P.R.China

Electronic supplementary material (ESM)

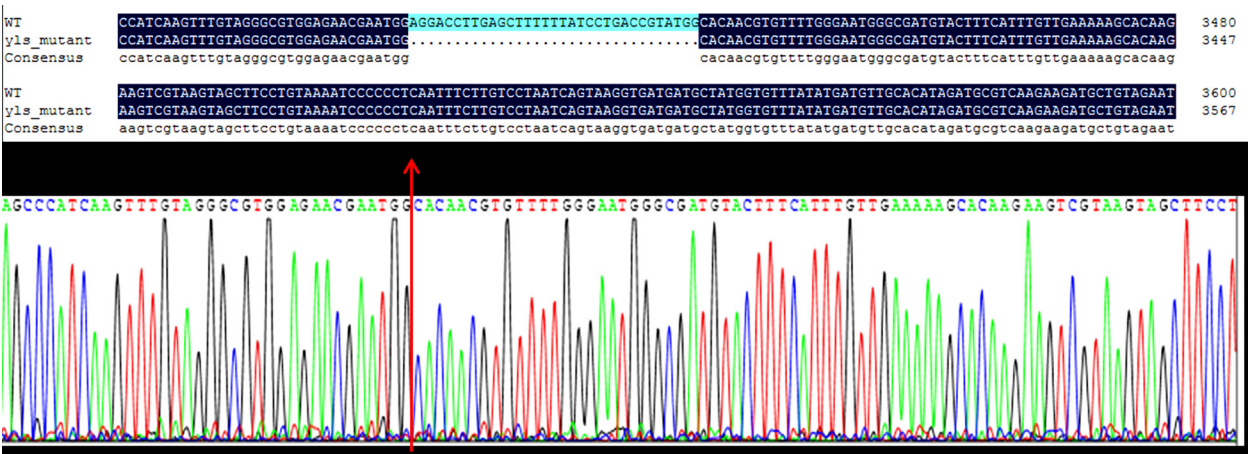


Figure S1. Sequence comparison (top) and sequencing map between WT and *yls* mutant at 33-bp deletion location; the red arrow indicates the 33-bp deletion position in *yls* mutant